



CREWE HALL



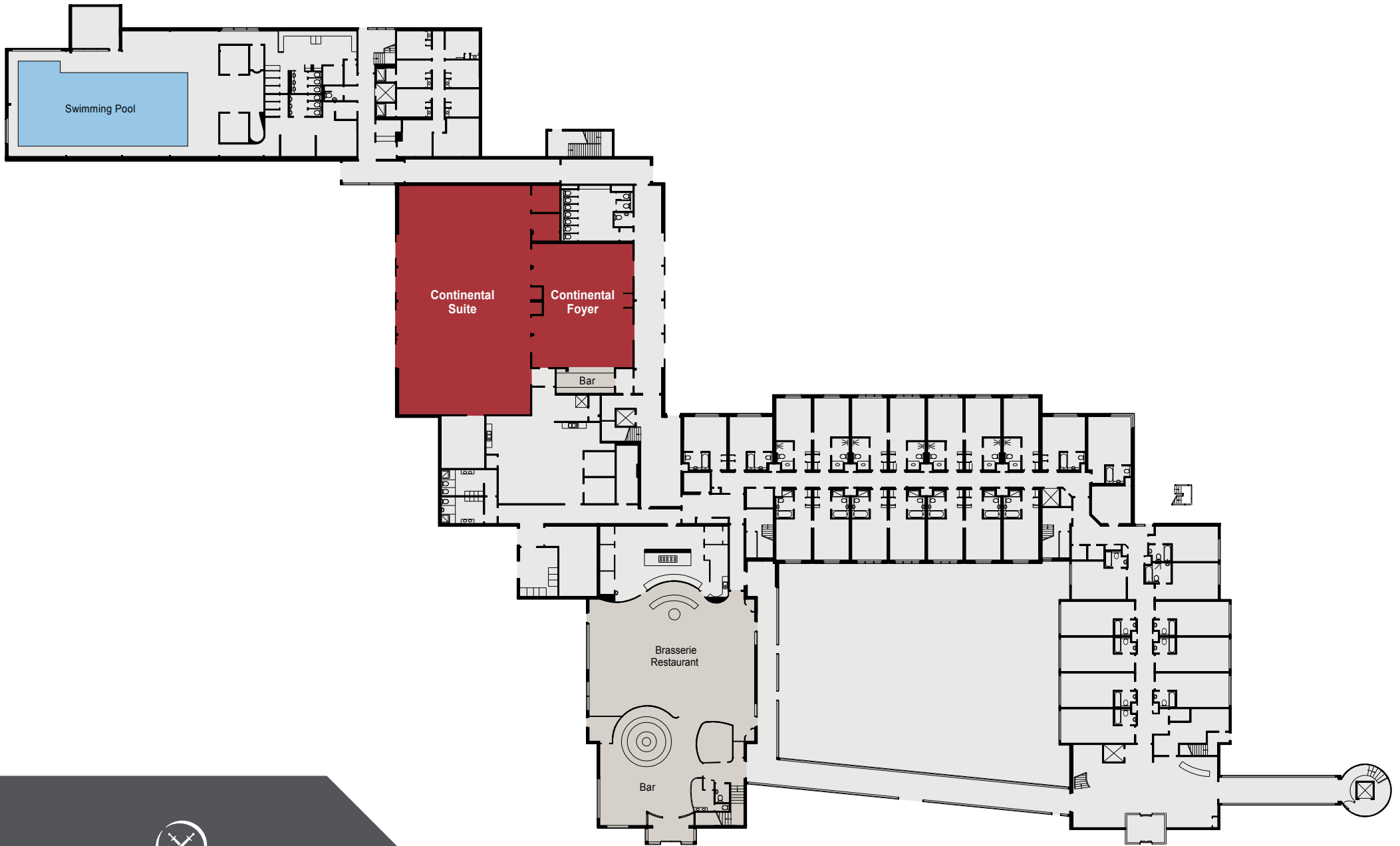
THE QHOTELS COLLECTION

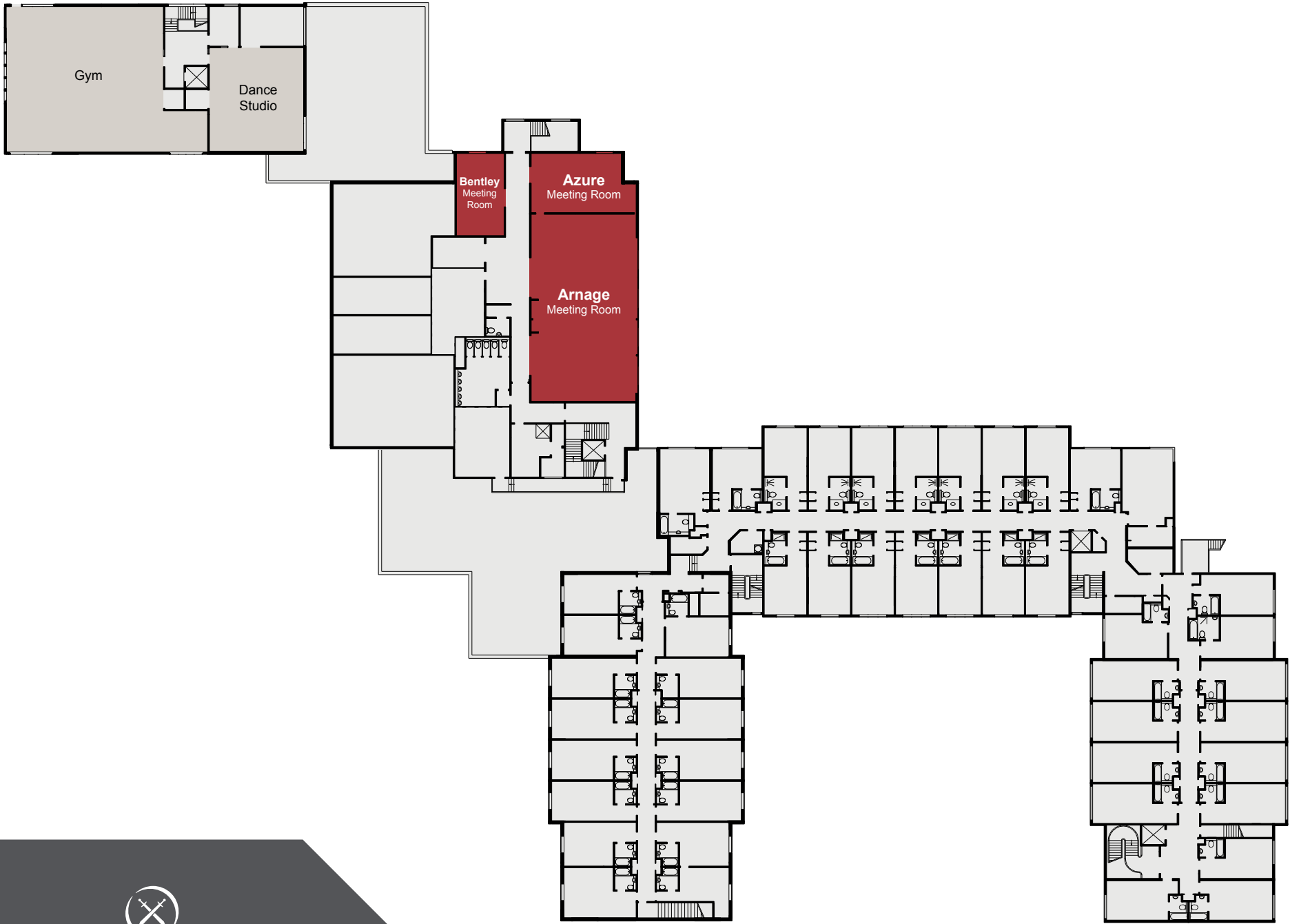
CAPACITIES

Meeting Room	Dimensions (m) L x W x H	Floor	Theatre	Cabaret	Classroom	Boardroom	Banquet	U-Shape	Dinner Dance
Continental Suite	24.0 x 14.0 x 3.7	G	364	224	172	96	350	78	320
Continental 1	8.2 x 14.0 x 3.7	G	121	64	58	32	0	26	0
Continental 2	n/a	G	n/a	n/a	n/a	n/a	n/a	n/a	n/a
Continental 3	n/a	G	n/a	n/a	n/a	n/a	n/a	n/a	n/a
Continental 4	8.2 x 14.0 x 3.7	G	121	64	58	32	0	26	0
Continental 1 & 2	12.0 x 14.0 x 3.7	G	180	104	85	48	150	38	100
Continental 3 & 4	12.0 x 14.0 x 3.7	G	180	104	85	48	150	38	100
Arnage Suite	17.3 x 9.7 x 3.1	1	180	90	60	48	0	40	0
Arnage 1	5.6 x 9.7 x 3.1	1	60	32	20	16	0	12	0
Arnage 2	n/a	1	n/a	n/a	n/a	n/a	n/a	n/a	n/a
Arnage 3	n/a	1	n/a	n/a	n/a	n/a	n/a	n/a	n/a
Arnage 4	4.3 x 9.7 x 3.1	1	50	24	20	12	0	10	0
Arnage 1 & 2	9.3 x 9.7 x 3.1	1	100	48	30	25	0	20	0
Arnage 3 & 4	8.1 x 9.7 x 3.1	1	90	40	28	20	0	18	0
Long Gallery	30.0 x 8.2 x 4.7	2	260	100	110	100	180	NA	130
Drawing Room	13.4 x 8.9 x 8.9	2	110	50	40	45	70	50	50
Library	13.1 x 5.1 x 4.6	2	85	30	35	35	40	18	0
Carved Parlour	10.2 x 5.2 x 4.3	1	50	24	20	25	30	18	0
Azure	5.5 x 7.7 x 3.1	1	50	24	20	18	0	10	0
Bentley	7.4 x 4.9 x 3.1	1	40	16	18	14	0	8	0
Oak Parlour	8.3 x 5.4 x 3.3	G	30	20	12	20	20	10	0
Apple	4.9 x 4.4 x 2.8	1	12	0	0	6	0	0	0
Hatton	6.5 x 6.3 x 2.8	1	26	15	12	16	0	15	0
Orange	4.3 x 4.6 x 2.5	G	12	0	0	6	0	0	0
Nantwich	6.4 x 5.4 x 2.5	G	25	20	12	16	20	15	0
James	6.6 x 5.4 x 3.3	1	0	0	0	8	0	0	0
Plum	4.3 x 4.6 x 2.4	1	0	0	0	4	0	0	0

Layout and Seating Arrangement: The layout for the event will consist of a mix of straight and round tables or all straight tables. The final arrangement will be determined by the hotel based on the confirmed number of delegates. The hotel reserves the right to adjust the seating configuration to best accommodate the final delegate count and ensure optimal space utilisation.







CREWE HALL
THE QHOTELS COLLECTION

NEW BUILD FIRST FLOOR



CREWE HALL

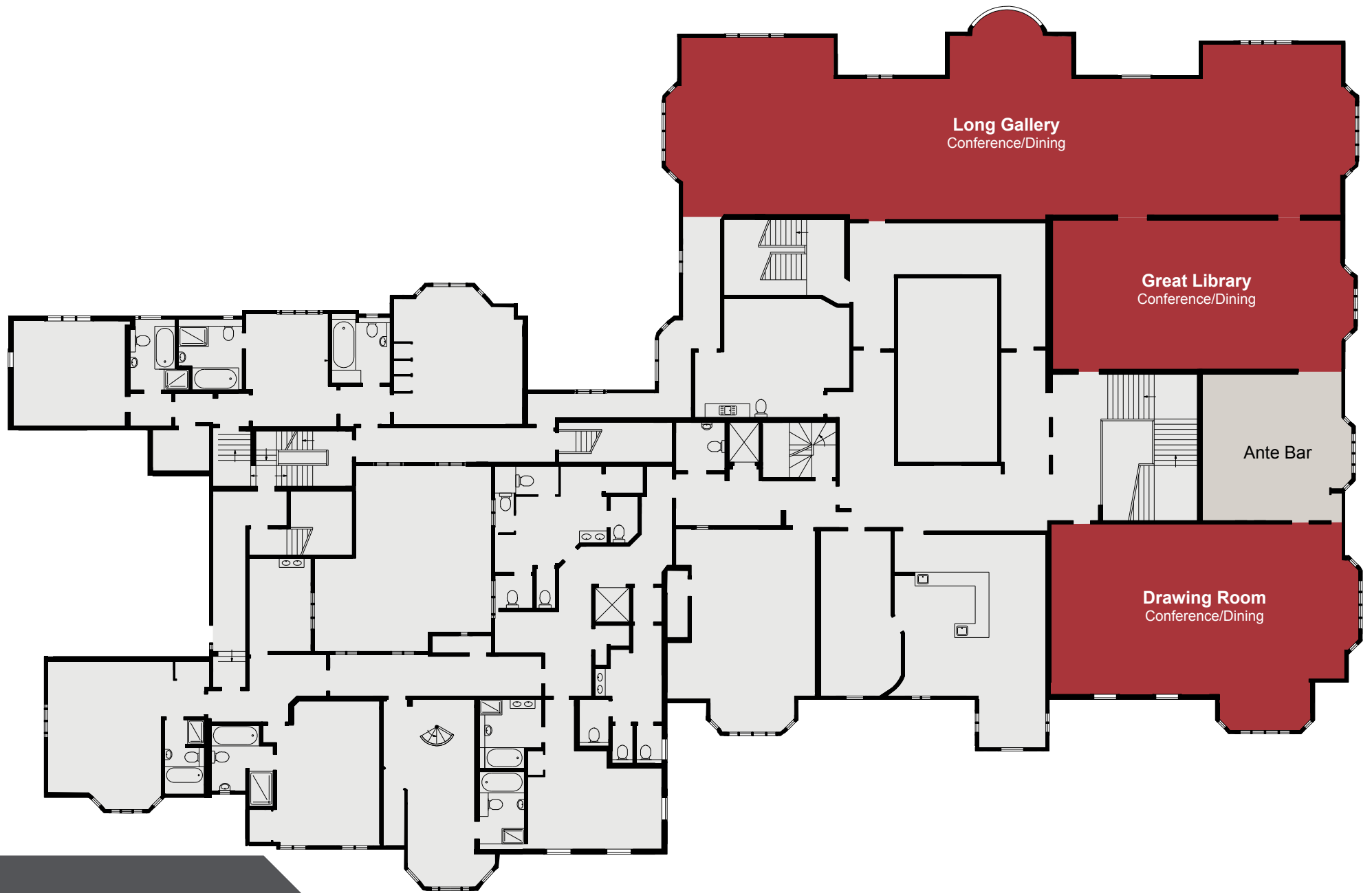
THE QHOTELS COLLECTION

OLD HALL GROUND FLOOR



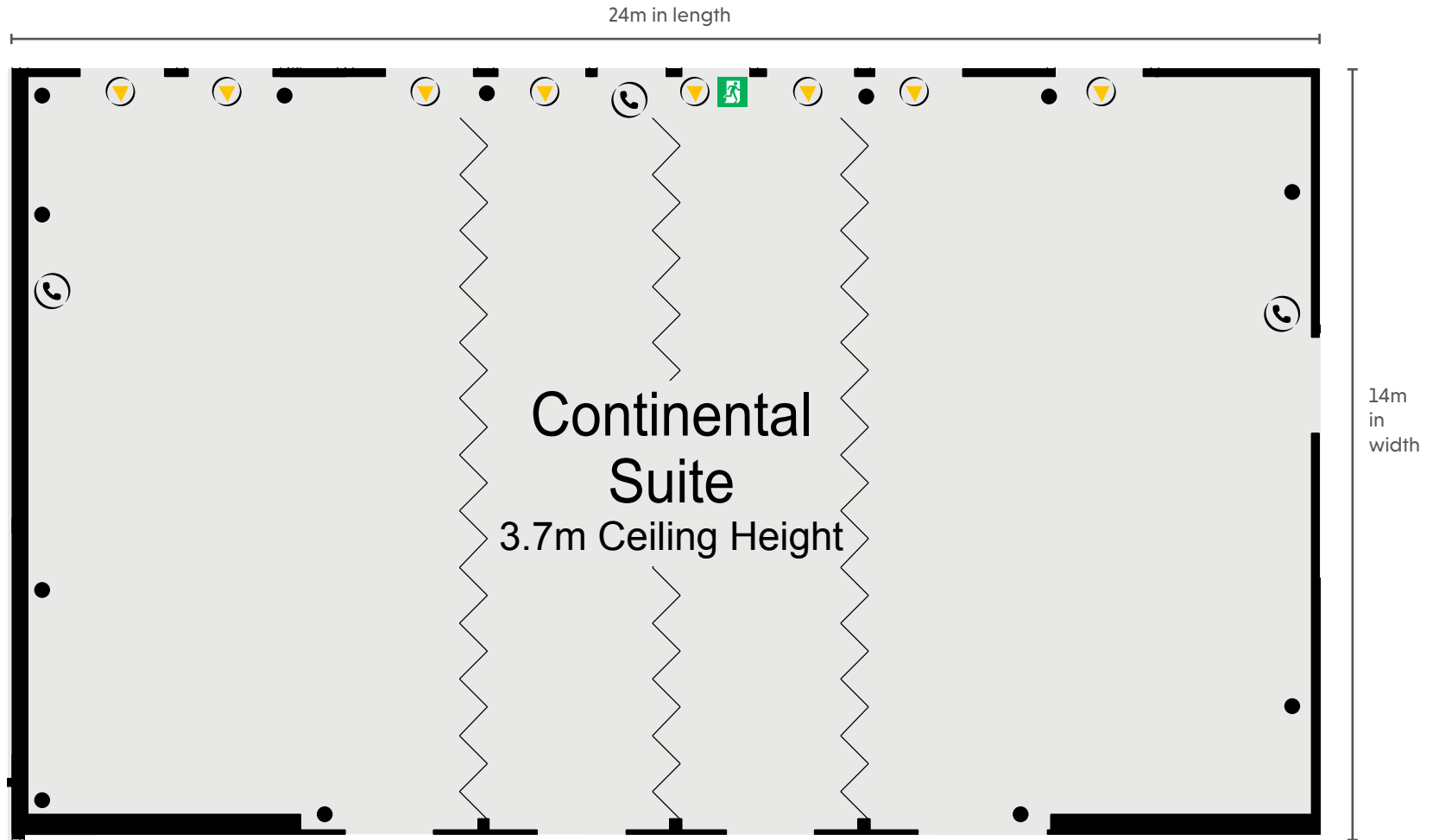
CREWE HALL
THE QHOTELS COLLECTION

OLD HALL FIRST FLOOR



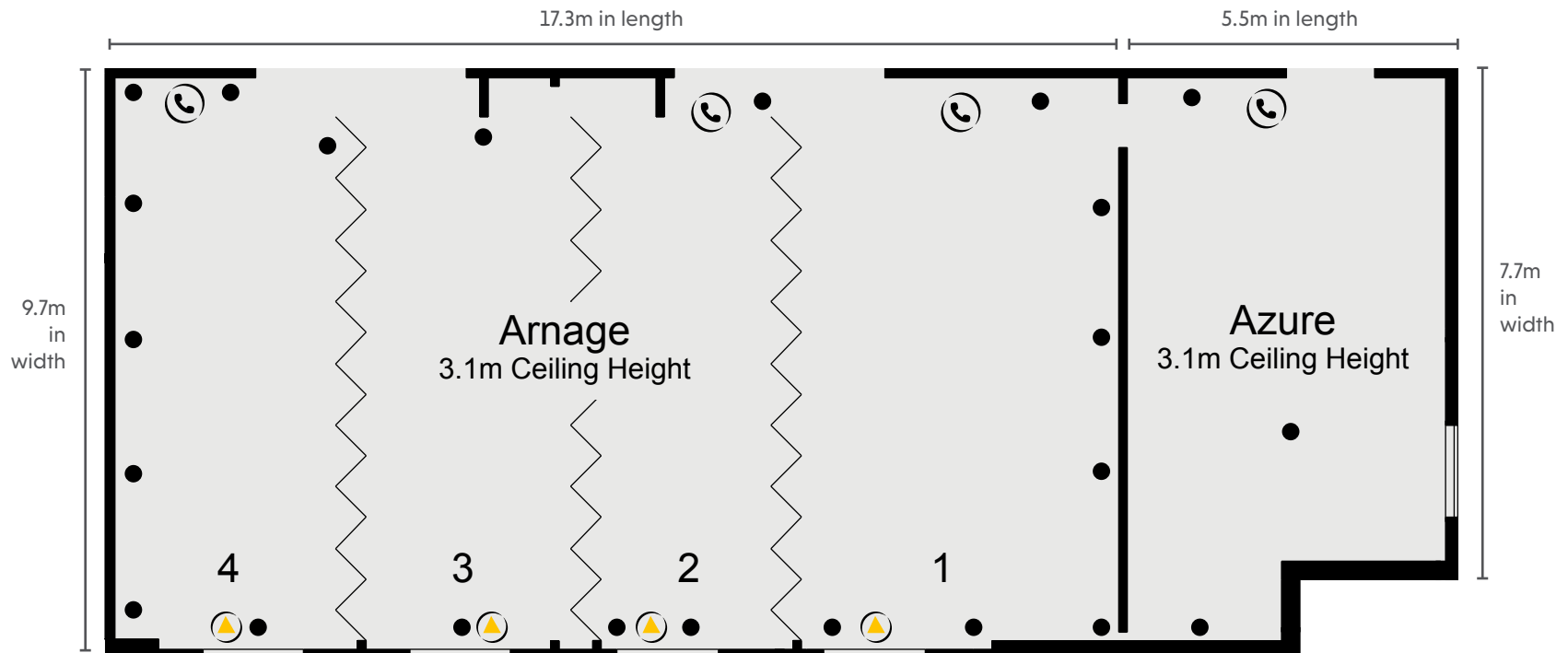
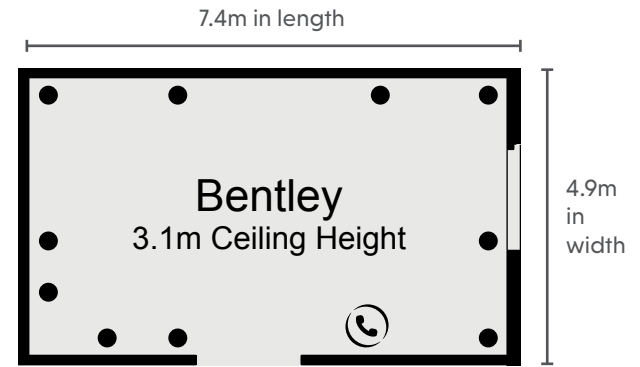
KEY

- Single 13amp Power Point
- Double 13amp Power Point
- ▶ Natural Light
- ☎ Telephone Socket
- ♿ Wheelchair Access
- 🚪 Fire Exit
- ⚡ Partition Wall



KEY

- Single 13amp Power Point
- Double 13amp Power Point
- ▶ Natural Light
- ☎ Telephone Socket
- ♿ Wheelchair Access
- 🚪 Fire Exit
- ⋈ Partition Wall



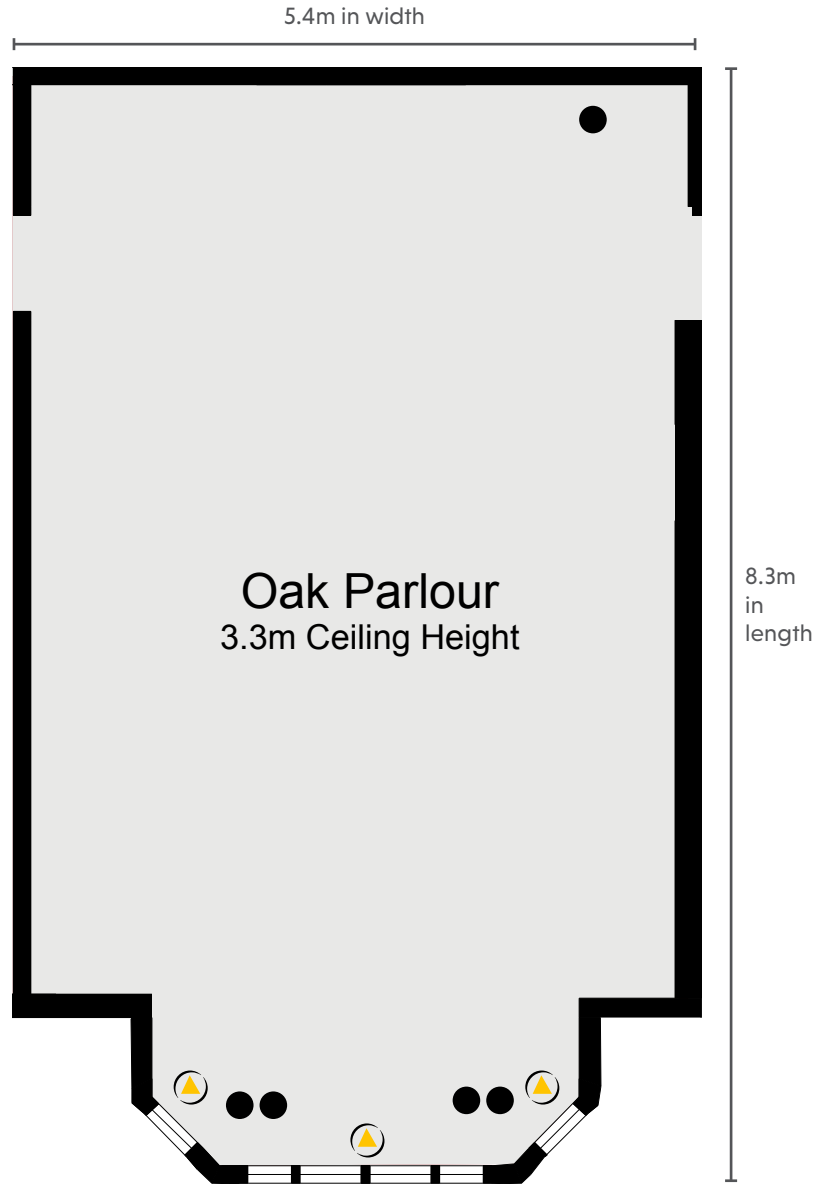
KEY

- Single 13amp Power Point
- Double 13amp Power Point
- ▶ Natural Light
- ☎ Telephone Socket
- ♿ Wheelchair Access
- 🚪 Fire Exit
- ⋈ Partition Wall



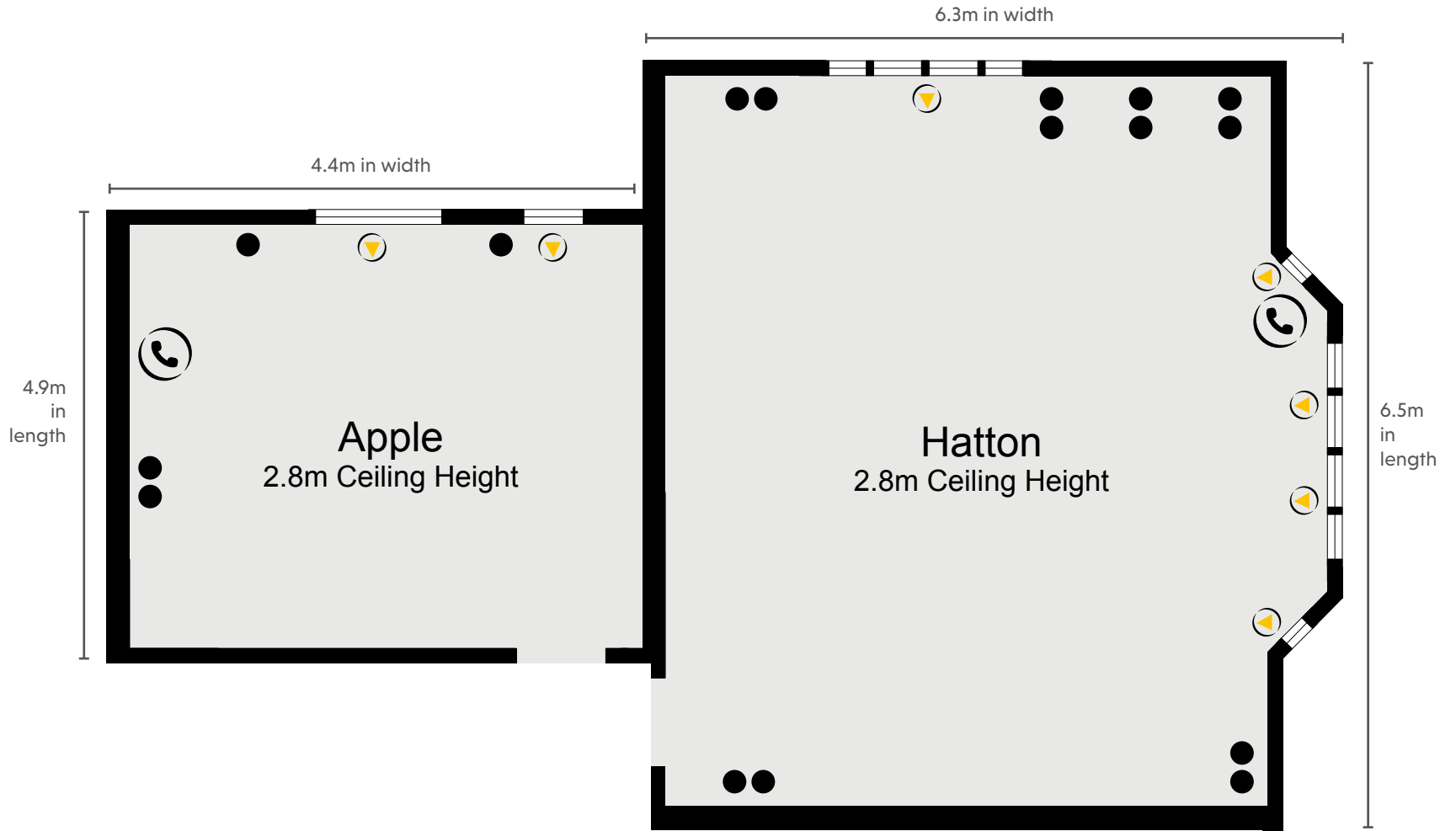
KEY

- Single 13amp Power Point
- Double 13amp Power Point
- ☀ Natural Light
- ☎ Telephone Socket
- ♿ Wheelchair Access
- 🚪 Fire Exit
- ⋈ Partition Wall



KEY

- Single 13amp Power Point
- Double 13amp Power Point
- ▶ Natural Light
- ☎ Telephone Socket
- ♿ Wheelchair Access
- 🚪 Fire Exit
- ⚡ Partition Wall

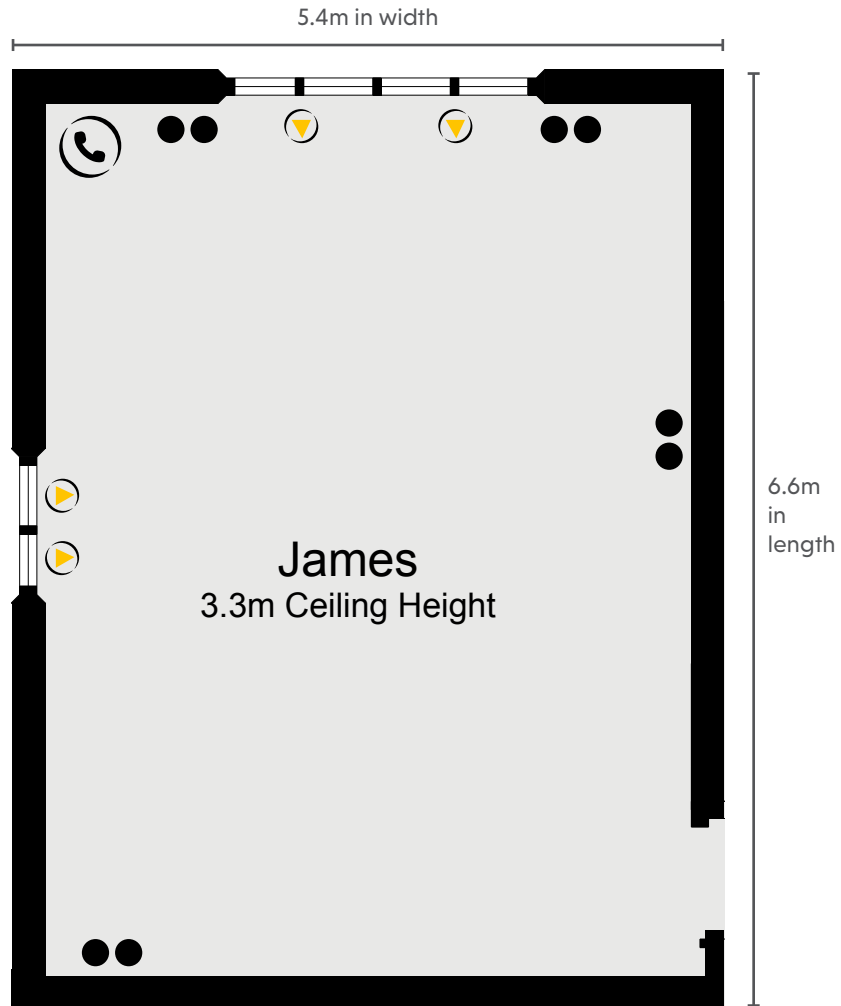


CREWE HALL
THE QHOTELS COLLECTION

OLD HALL FIRST FLOOR

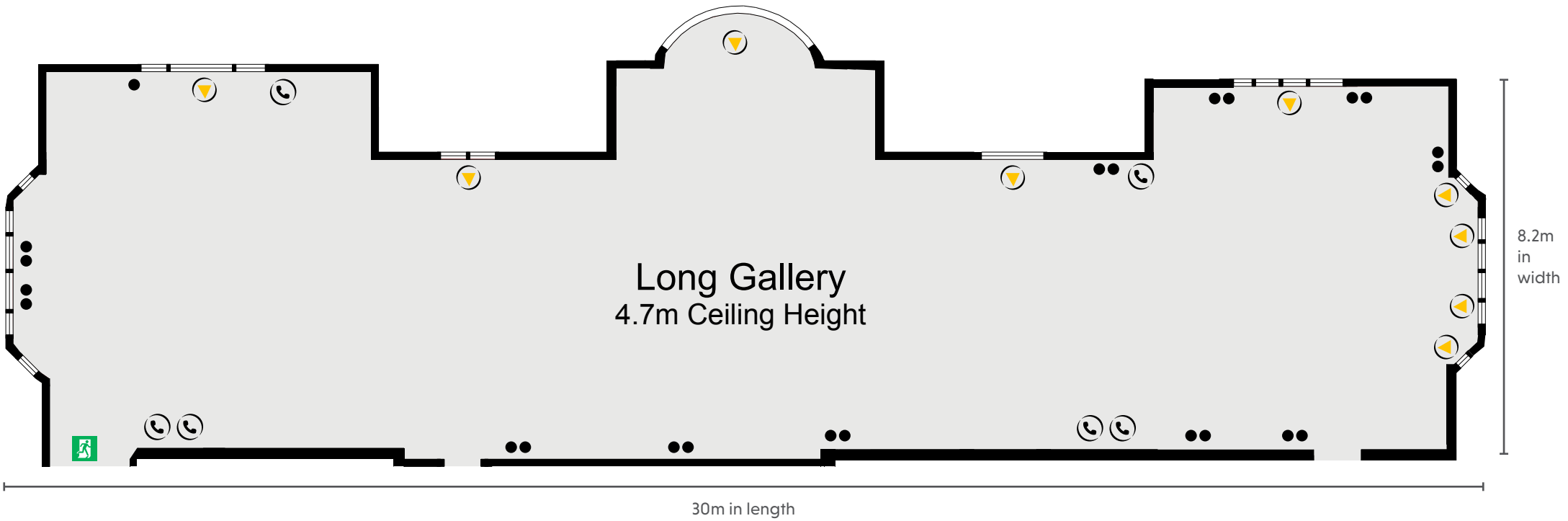
KEY

- Single 13amp Power Point
- Double 13amp Power Point
- ▶ Natural Light
- ☎ Telephone Socket
- ♿ Wheelchair Access
- 🚪 Fire Exit
- ⋈ Partition Wall



KEY

- Single 13amp Power Point
- Double 13amp Power Point
- ▶ Natural Light
- ☎ Telephone Socket
- ♿ Wheelchair Access
- 🚪 Fire Exit
- ⋈ Partition Wall

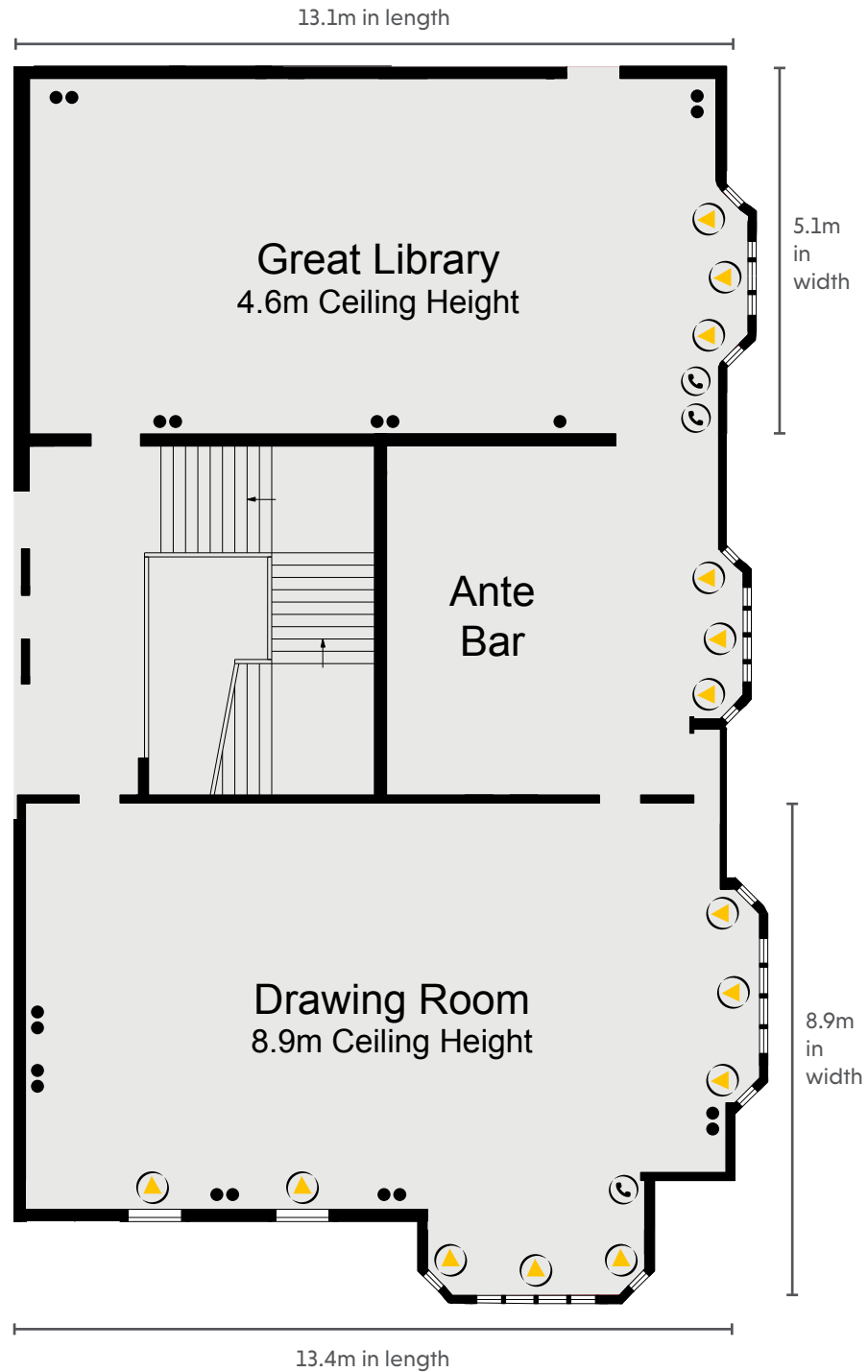


CREWE HALL
THE QHOTELS COLLECTION

OLD HALL SECOND FLOOR

KEY

- Single 13amp Power Point
- Double 13amp Power Point
- ▶ Natural Light
- ☎ Telephone Socket
- ♿ Wheelchair Access
- 🚪 Fire Exit
- ⋈ Partition Wall



CREWE HALL
THE QHOTELS COLLECTION

OLD HALL SECOND FLOOR